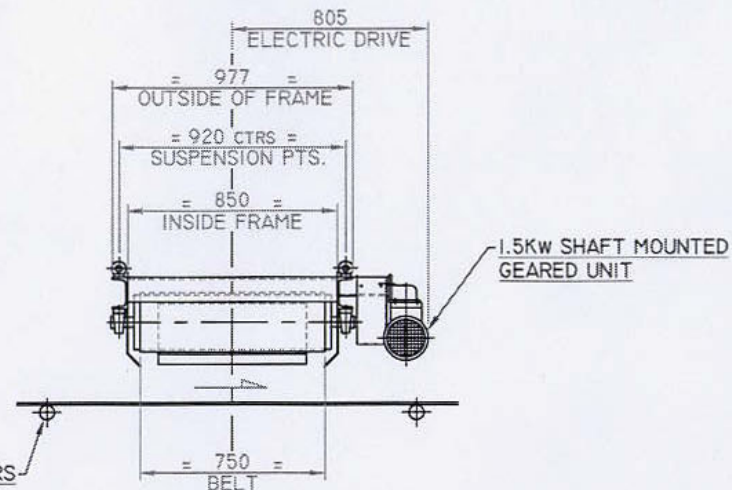
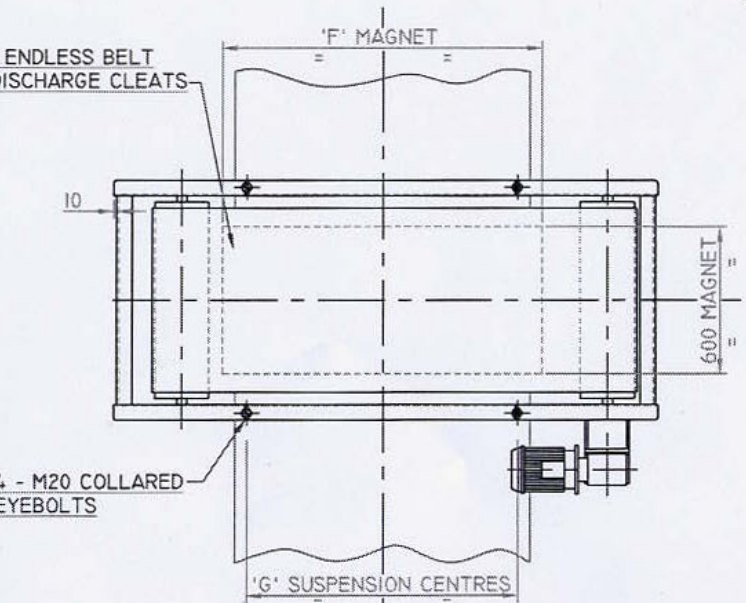


FULL LENGTH STAINLESS STEEL BELT GUARDS FITTED TO BOTH SIDES OF MACHINE



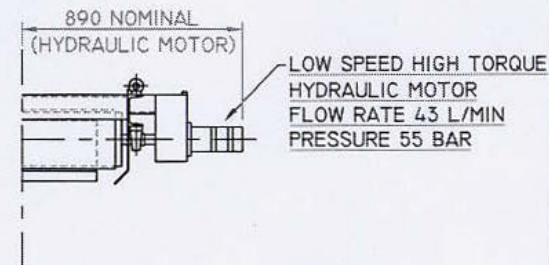
1.5kw SHAFT MOUNTED GEARED UNIT

POSITION MAGNET BETWEEN IDLERS



NYLON/TERYLENE ENDLESS BELT WITH 50MM HIGH DISCHARGE CLEATS

NON MAGNETIC DISCHARGE CHUTE TO BE SUPPLIED BY CUSTOMER



LOW SPEED HIGH TORQUE HYDRAULIC MOTOR  
FLOW RATE 43 L/MIN  
PRESSURE 55 BAR

MODEL	A	B	C	D	E	F	G	WEIGHT (KGS)
8 PCB 4	1910	970	765	665	600	700	880	595
8 PCB 5	1910	970	765	665	750	850	880	665
8 PCB 6	1910	970	765	665	900	1000	880	745
8 PCB 7	2210	1120	915	815	1000	1150	1100	835
8 PCB 8	2210	1120	915	815	1200	1300	1100	905
8 PCB 9	2510	1270	1065	965	1400	1450	1300	995
8 PCB 10	2510	1270	1065	965	1500	1600	1300	1055
8 PCB 11	2810	1420	1215	1115	1700	1750	1500	1135
8 PCB 12	2810	1420	1215	1115	1800	1900	1500	1200

A	REDRAWN ON C.A.D	DF	09/99
MOD	DESCRIPTION	SIGN	DATE
THIS DRAWING AND INFORMATION IS THE PROPERTY OF KW SUPPLY MAGNET SYSTEMS, AND MUST NOT BE COPIED OR RELATED TO A THIRD PARTY WITHOUT WRITTEN PERMISSION.			

KW SUPPLY  
MAGNET SYSTEMS  
ROTTERDAM  
HOLLAND  
TEL: +31(0)10-4291380  
FAX: +31(0)10-4292168  
WWW.KWSUPPLY.COM

	SIGN	DATE
DRAWN	DF	09/99
CHECKED		
APPROVED		
SCALE	1:15	



TITLE	OUTLINE DIMENSIONS OF Mk5 K SERIES RANGE OF 8 PCB PERMANENT CROSSBELT OVERBAND SEPARATORS		
PROJECTION		A3	8220
ISSUE	A		